

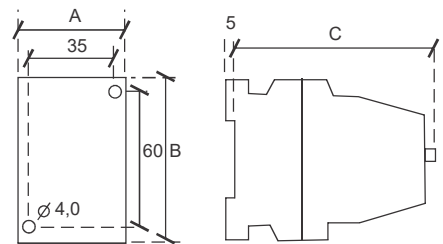
CARACTERÍSTICAS TÉCNICAS (mm)

NORMAS DE REFERÊNCIA IEC60947-4 - IEC947 VDE0660																			
		CJX1S-09	CJX1S-12	CJX1S-16	CJX1S-22	CJX1S-32	CJX1S-38	CJX1S-45	CJX1S-63	CJX1S-75	CJX1S-85	CJX1S-110	CJX1S-140	CJX1S-170	CJX1S-205	CJX1S-250	CJX1S-300	CJX1S-400	CJX1S-475
Corrente nominal (A)		660						750				1000							
Tensão de uso Ue. Max (VCA)																			
AC3	le max (A)	9	12	16	22	32	38	45	63	75	85	110	140	170	205	250	300	400	475
	Potência 220VCA	3/2.2	4/3	5.5/4	7.5/5.5	10/7.5	9.5/12.8	15/11	20/15	25/18.5	30/22	40/30	50/37	60/45	75/55	100/75	125/90	156/115	175/115
	Potência 380VCA	5/3.7	7.5/6	10/7.5	15/11	20/15	18.5/25	30/22	40/30	50/37	60/45	75/55	100/75	125/90	150/110	175/130	200/150	250/165	375/250
	Vida Elétrica (x 10 ⁵)	1												0.8					
AC4	le max (A)	3.3	4.3	7.7	8.5	15.6	18.5	24	28	34	42	54	68	75	90	103	112	120	135
	Potência 220VCA	1/0.75	1.5/11	2.7/2	3/2.2	5.8/4.3	15/11	8.8/6.5	11/8	11.5/8.7	13/9.7	21/15.6	21/15.6	28.5/21	34/25	42/31	51/37.5	62.5/46	69/48
	Potência 380VCA	1.9/1.4	2.5/1.9	4.7/3.5	5.5/4	10/7.5	12.2/9	16/12	19/14	23/17	28.5/21	36.5/27	47.5/35	51.3/38	68/50	78.5/58	89.5/66	108/80	120/80
	Vida Elétrica (x 10 ⁵)	0.15												0.1					
AC1	Carga resistiva le=Ith (A)	20	20	30	30	45	45	70	70	90	90	160	160	200	210	300	300	400	475
	Potência kw 220VCA	7.6	7.6	11.4	11.4	17.1	17.1	30.4	30.4	38.1	41.9	61	68.6	76.2	92	114.3	135	161.9	182
	Potência kw 380VCA	11	11	19.7	19.7	29.6	29.6	52.6	52.6	65.8	72.4	105.3	118.6	131.6	158.7	197.4	232.2	200	225
	Vida Mecânica (x 10 ⁵)	12						10						10					
Tensões disponíveis (bobinas)		24, 127, 220 e 380VCA									110, 220, e 380VCA								
Intertravamento mecânico		Disponível																	
Jogos de contato		Consulte																	
Alt. máx. para utilização (m)		2000																	
Temperatura ambiente		-25°C ~ + 55°C																	
Conformidade		IEC947 - VDE0660 - IEC60947-4																	
Contatos auxiliares		2 NA + 2 NF																	
Relés compatíveis		JRS2 12,5/Z	JRS2 25/Z	JRS2 45/Z	JRS2 80/Z	JRS2 135/Z	JRS2 180/Z	JRS2 400/F	JRS2 630/F										

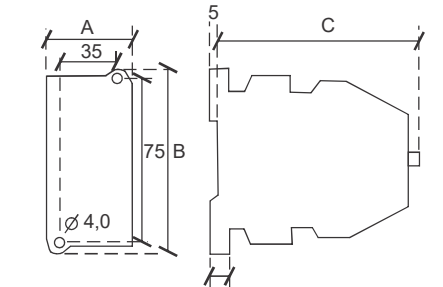
DIMENSÕES (mm)

Modelo	A	a	B	C
CJX1S - 09	45	-	75	97
CJX1S - 12	45	-	75	97
CJX1S - 16	45	-	84	107
CJX1S - 22	45	-	84	107
CJX1S - 32	82	-	102	104
CJX1S - 38	82	-	102	104
CJX1S - 45	89	70	117	125
CJX1S - 63	89	70	117	125
CJX1S - 75	101	70	135	141
CJX1S - 85	101	70	135	141
CJX1S - 110	120	101	150	152
CJX1S - 140	120	101	150	152
CJX1S - 170	135	110	180	188
CJX1S - 205	135	110	180	188
CJX1S - 250	145	120	200	203
CJX1S - 300	145	120	200	203
CJX1S - 400	160	130	200	227
CJX1S - 475	160	130	200	227

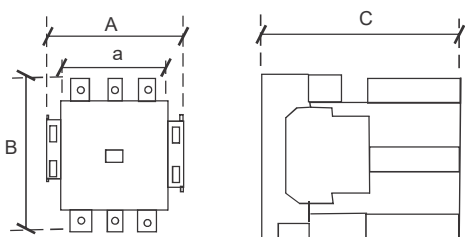
CJX1S-09 e CJX1S-12



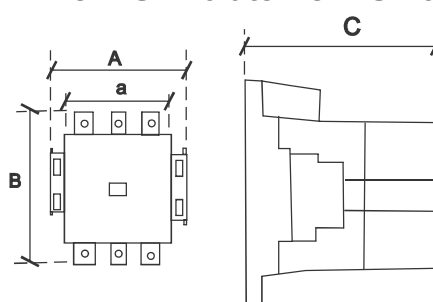
CJX1S-16 e CJX1S-22



CJX1S-32 até CJX1S-140



CJX1S-170 até CJX1S-205



CJX1S-250 até CJX1S-475

